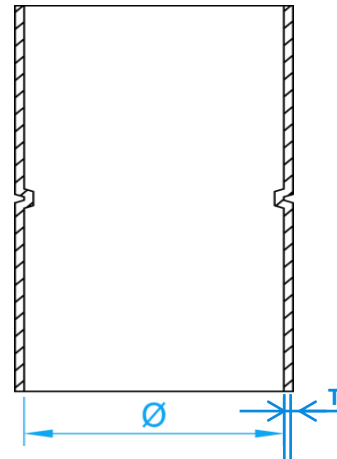


CAPILLARY FITTING EQUAL SOCKET WITH ROLL-STOP

COMPLY WITH BS EN 1254-1



CROSS SECTIONAL VIEW

COMPONENTS PARTS

| PARTS | MATERIAL |
|--------------|----------|
| EQUAL SOCKET | COPPER |

DIMENSIONS

| SKU | DN Ø (mm) | T (mm) | WEIGHT (Kg) | PCS/CTN |
|----------|--------------|-----------|----------------|---------|
| MBLES015 | 15 | 0.7 | 0.007 | 2000 |
| MBLES020 | 22 | 0.9 | 0.019 | 750 |
| MBLES025 | 28 | 0.9 | 0.029 | 340 |
| MBLES035 | 35 | 1.0 | 0.050 | 240 |
| MBLES042 | 42 | 1.1 | 0.071 | 130 |
| MBLES050 | 54 | 1.4 | 0.132 | 72 |
| MBLES065 | 67 | 1.7 | 0.206 | 44 |
| MBLES080 | 76 | 1.7 | 0.269 | 36 |
| MBLES100 | 108 | 2.1 | 0.732 | 12 |
| MBLES150 | 159 | 2.7 | 1.200 | 4 |

 Note: The weight tolerance standard is $\pm 5\%$